

# 640 Fifth Avenue, NYC

## Type

Commercial Typology 2: Elevator to Sidewalk

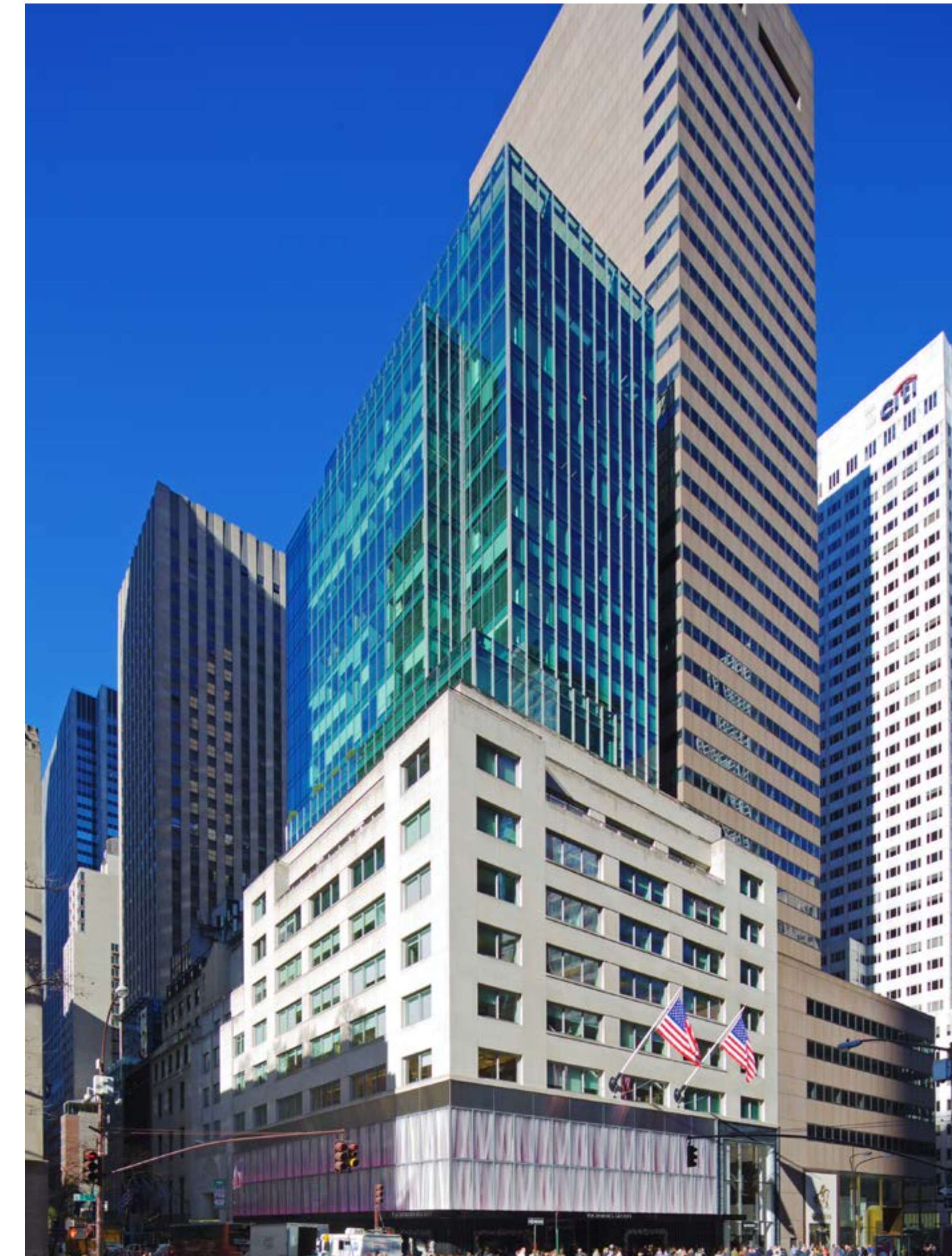
## Best Practice Strategies

- 2.01 Determine waste streams and quantities
- 2.02 Plan a route
- 2.05 Consider staff procedures
- 2.07 Considerations for multi-tenant buildings
- 2.09 Provide equal convenience disposal
- 2.10 Provide clear visual cues and signage
- 2.12 Develop awareness & education programs
- 2.14 Design for occupancy
- 2.18 Facilitate donation and reuse

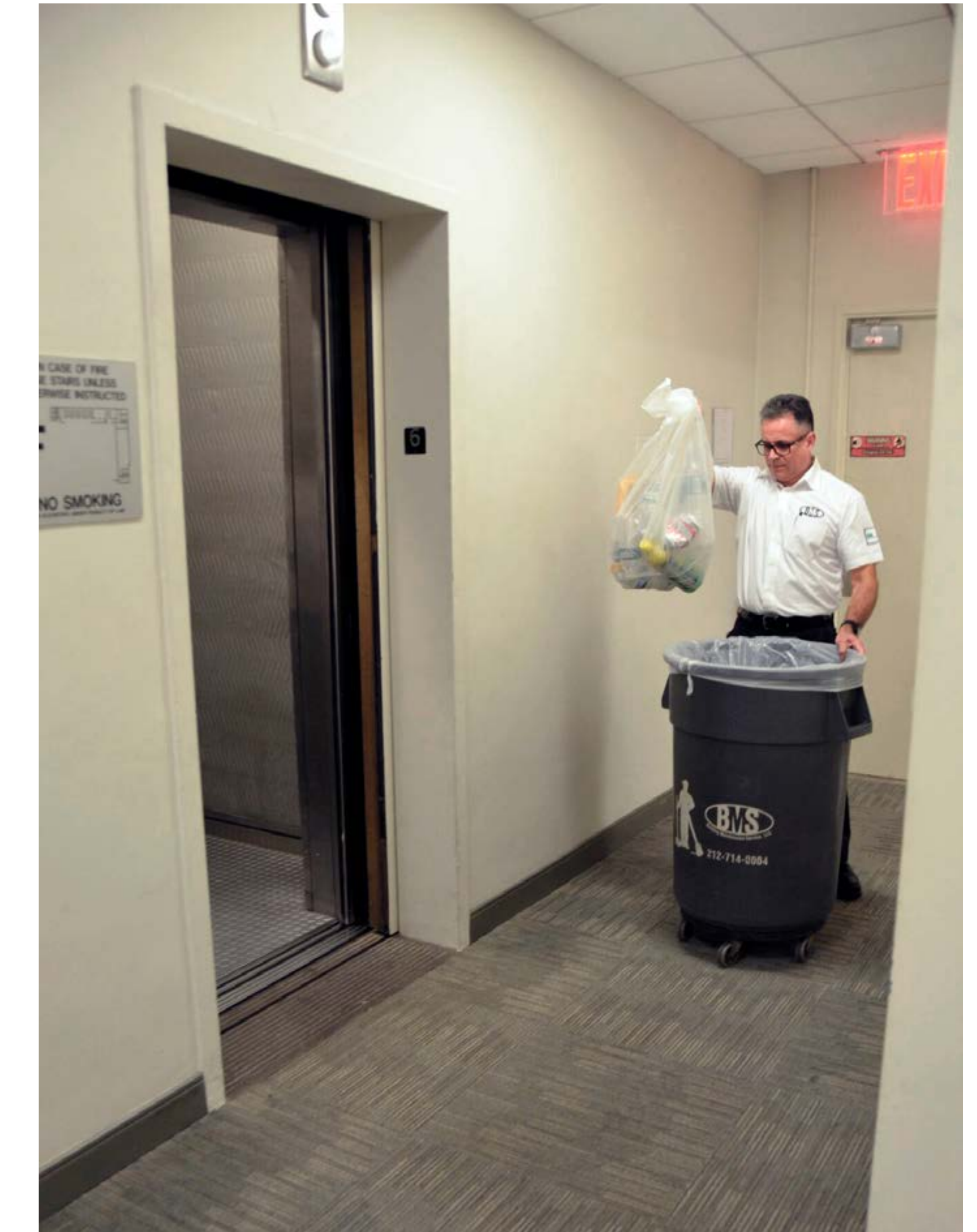
## Summary

Waste from buildings with limited indoor storage is usually staged for street pickup every night. Without containerization, the waste can attract pests and offend neighbors. To avoid such problems, Vornado Realty Trust designed an efficient system for moving the waste generated by the office tenants at 640 Fifth Avenue, a 22-story, 327,000 sq ft tower.

In some offices, waste is no longer tossed into a small trash bin under each desk. Instead, tenant employees carry their waste into common areas to separate wet trash; paper; and MPG into their respective containers. Clear signage, provided by building management, and observant



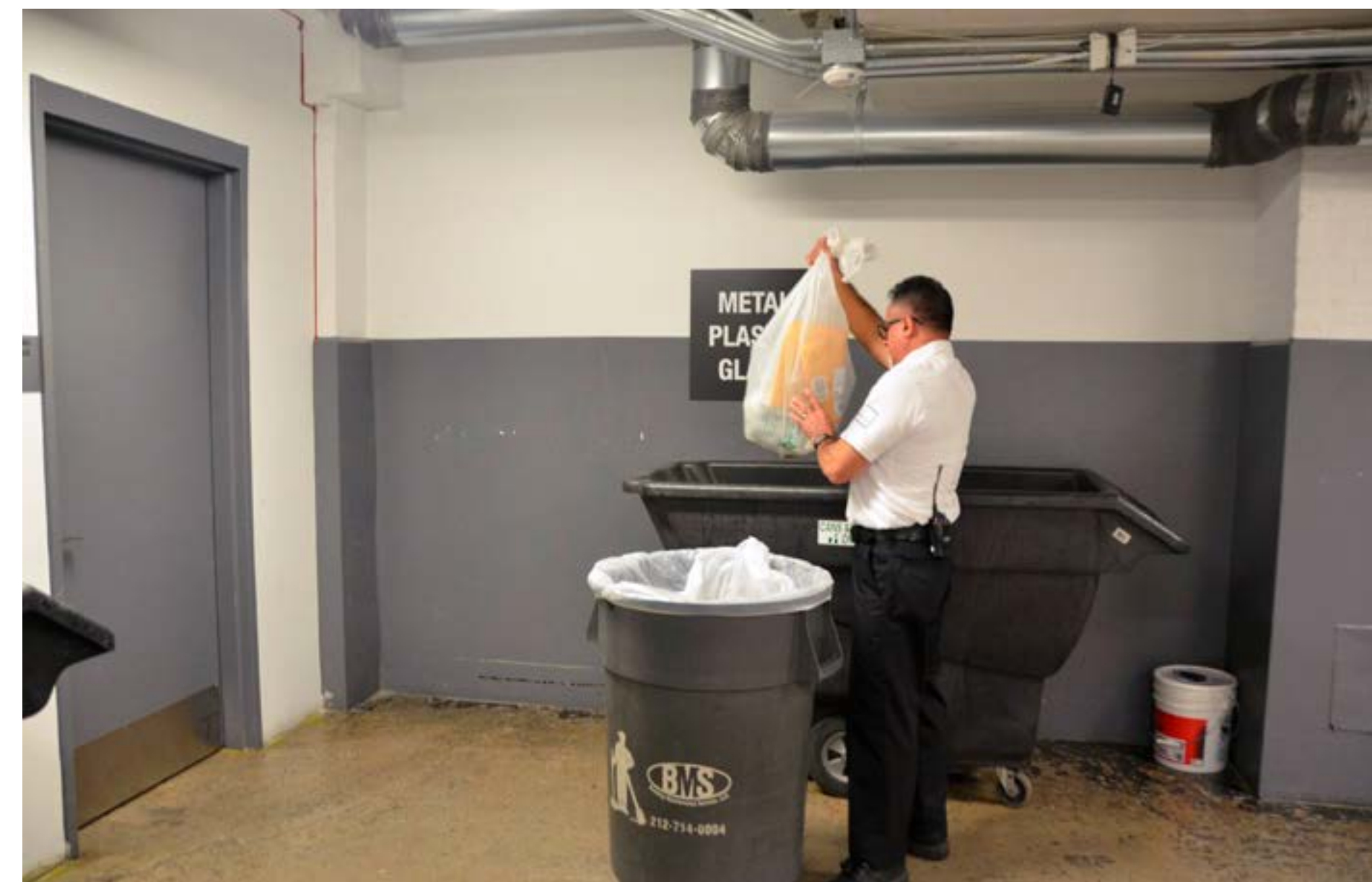
640 Fifth Avenue exterior



Collection of recycling from office spaces by Building Maintenance Service (BMS) employee

coworkers at these central waste stations help promote proper separation protocol. Vornado has developed consistent signage for tenants used throughout their NYC portfolio. Central storage is provided in the building's cellar for bulk waste, C&D waste and e-waste.

Each night, building staff collects trash and recycling from each floor's containers using bins-on-dollies. These are brought down the service elevator to the cellar where the bags of trash and recycling are transferred to tilt trucks. The tilt trucks are wheeled to the street, where bags are set out for collection by the hauler's recycling and garbage trucks.



Waste and recycling bins and recycling signs in corporate office kitchen; transfer of recycling from bin on dolly to tilt truck for movement to street; e-waste recycling storage; bulk waste collection containers in storage area

### Challenges

Staff have a limited window of time in which to collect and move discarded materials from office spaces to the sidewalk for pickup. Tenants are required to store trash and recyclables in their office spaces until staff collects it at night. If there's a disruption in the hauler's collection schedule, discarded materials can pile up in the building's central storage area or on the sidewalk, where fines may be issued.

**VORNADO SUSTAINABILITY**

**Rigid containers and packaging go to the pantry for recycling!**

Glass, metal and plastic containers can be recycled if they are made of rigid materials. Film plastics (plastic bags, candy wrappers and chip bags) cannot be recycled - they go in the trash.

**THIS INCLUDES:**  
 aluminum foil  
 plastic take out containers  
 beverage cartons  
 rigid plastic  
 metal cans  
 glass jars and bottles

**DOES NOT INCLUDE:**  
 plastic film  
 plastic bags  
 chip bags  
 candy wrappers

Rinse and place all glass, metal, and plastic beverage containers in the designated bins located in pantry areas. Place all plastic lined cartons (i.e. milk, soup, juice) in GMP bins.

Vornado Realty Trust corporate recycling signage for glass, metal and plastic.